


Complete your L3 BTEC Health and Social Care Award



Resit Unit 1 & 2 Exam May (if required)



Learning Aim D
Investigate roles of professionals and how they work together

Learning Aim C
Investigate the principles that enable people to overcome challenges

Learning Aim B
Examine ethical issues faced when meeting care needs

Unit 1 exam – Human lifespan development

Examine principles, values and skills which underpin the care and support needs of individuals



Learning Aim A

Learning Aim D
Develop a treatment plan for service users with physiological disorders to meet their needs

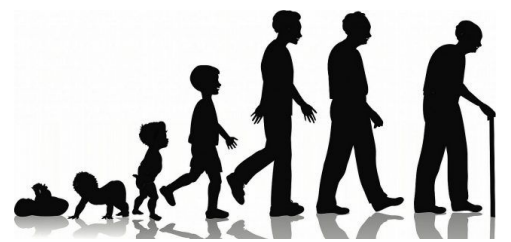
Meeting individual care and support needs

Unit 5 – TASK 1

Year 2

TASK 2

Developing a treatment plan



Summer Term

Unit 2 exam - Working in Health and Social Care

Learning Aim C
Examine treatment and support for service users with physiological disorders

Learning Aim B
Examine the investigation and diagnosis of physiological disorders

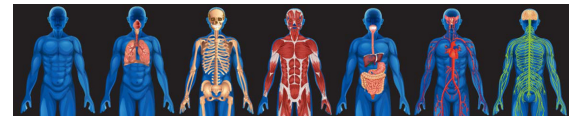


Year 1

Introduction to H&SC

Unit 14- TASK 1

Learning Aim A



- What is Health and Social care??
- Course expectations
- Course breakdown

Understand different care settings and physiological disorders

Investigate the causes and effects of physiological disorders

Your BTEC H&SC Journey starts here ...

